

ITEM	DESCRIPTION	QTY.	DWG. OR P/N
* 1	MONITOR COVER W/INNER LID	1	MC-36-MB-T
2	FLAT WASHER	4	800976
3	EYE BOLT	2	800975
4	LOCK NUT	2	800977
5	FLANGED ANGLE BALL VALVE	1	BFA13-777W-MSB
6	TEE	2	T184-774
7	SOLDER BUSHING	2	CS8-77
8	1" PVC CAP	2	050424
9	1" PVC BRACE BAR	1	PS-BB-36
10	PLASTIC TIES	9	300370
★ 11	COUPLING	2	C14-77-Q
12	LOCK NUT	2	LN-7
13	TEE	2	CSTEE-7-S
14	1 3/8" OD COPPER TUBE	1	
15	1 1/8" OD COPPER TUBE	2	
16	BALL VALVE	1	B41-444W
17	SOLDER BUSHING	1	CS8-44
★ 18	METER ADAPTER	1/PR	A67
19	FLANGED ANGLE DUAL CHK VL	1	HHFA31-777-MSB
20	36" CORRUGATED PVC TILE	1	300264
21	2 1/8" OD COPPER TUBE	2	
22	NIPPLE	2	C88-77-5

* ORDERED SEPARATELY
 ★ SHIPPED UNASSEMBLED

NOTE: The curb box (or shut-off box) location must be outside of pit

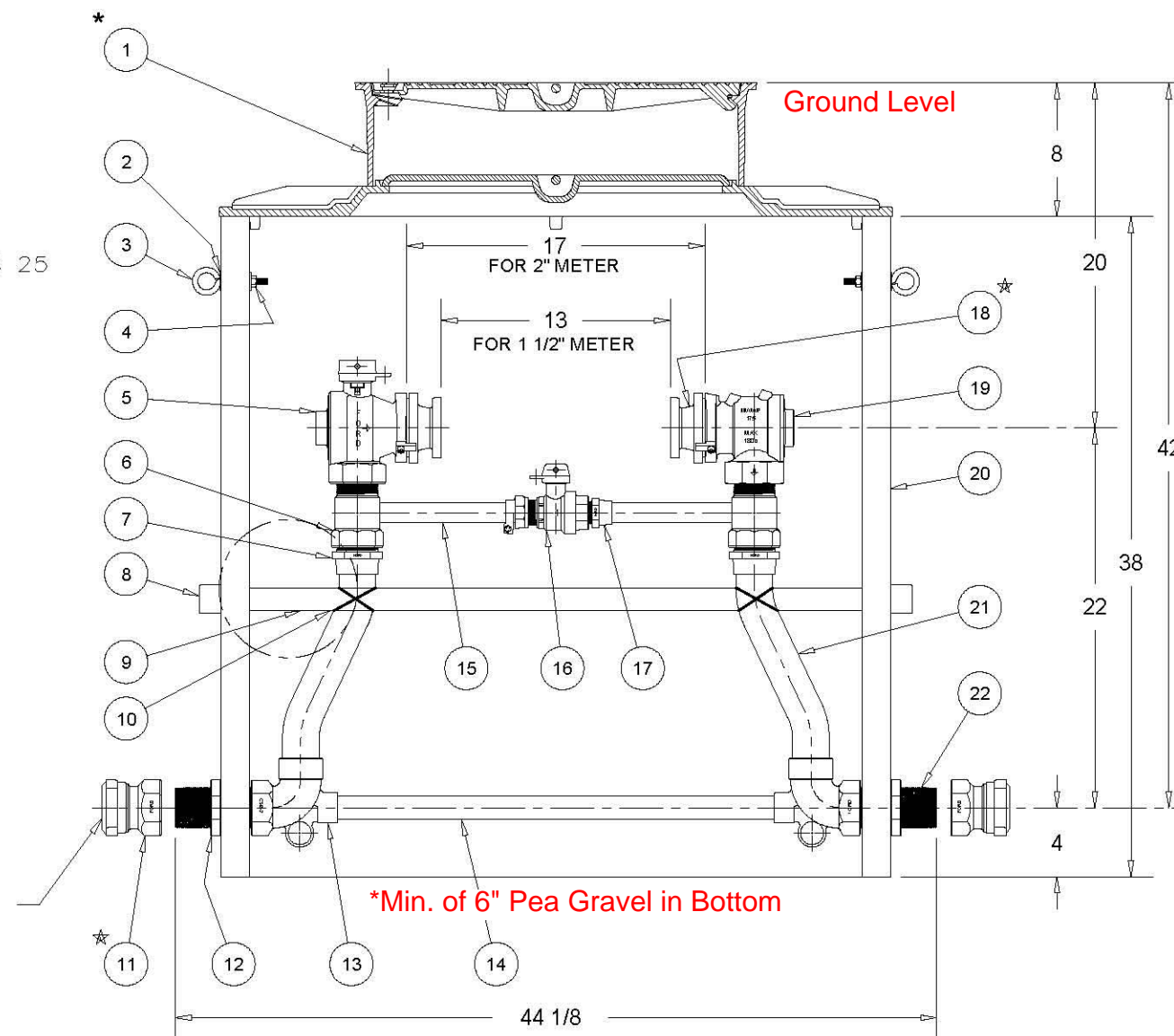
**** BACKFLOW MUST BE INSTALLED AFTER METER OUTSIDE OF PIT BEFORE WATER METER CAN BE INSTALLED ****

MATERIAL:

CAST GRAY IRON,
 ASTM A48-94, CLASS 25

ALL BRASS OF
 85-5-5-5 RED BRASS
 UNS C83600
 AWWA C800-05
 ASTM B62-02

2" CTS QUICK JOINT
 INLET & OUTLET



PMBHH-744-C1080403

ANGULAR ± N/A	ASSY, 2" PIT SETTER, BV INLET, HHFA OUTLET, W/HIGH BY-PASS, 42" SERVICE LINE DEPTH		
DECIMAL ± N/A	MATERIAL		
FRACTIONAL ± N/A	DRAWN BY DLG	DATE 2-22-06	DRAWING NO. CIDS# 10804
TOLERANCE (Except as Noted)	CHK'D BY RLR	SCALE 1/10=1	B-C10804-03
THE FORD METER BOX CO., INC. Wabash, Indiana 46992 U.S.A.			

REV.	DATE	DESCRIPTION	BY